



# UPStart Quick Start Guide

## Create a UPB Network with the UPStart Wizard



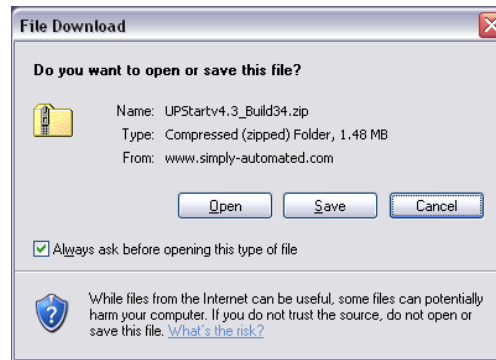
# Simply Automated's UPStart Quick Start Guide

Download UPStart .....	3
Connecting the Computer Interface Module.....	4
Getting Started with UPStart – The UPStart Wizard.....	5
Open UPStart .....	5
Create a Network.....	7
Add Devices .....	8
Creating Links.....	9
Add Links to Devices.....	9
Program Network.....	11
Test Operation .....	12
Save File .....	13
Editing.....	13

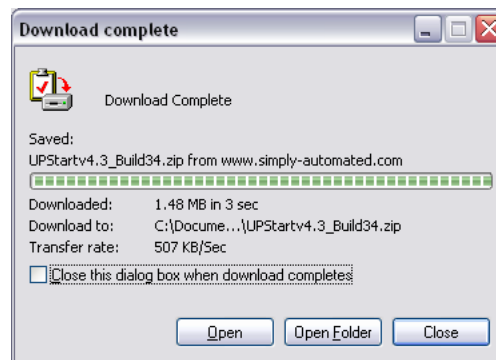
## The following are step by step instructions for using the UPStart software.

### Download UPStart

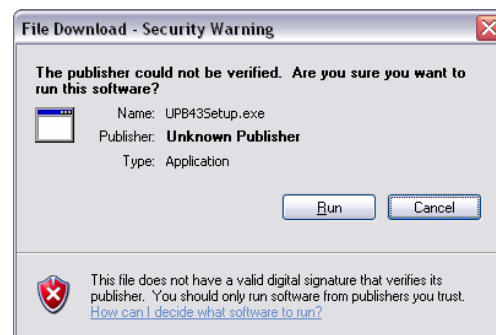
1. Download the latest version of UPStart: Open your Internet browser program and enter [http://www.simply-automated.com/products/sa\\_upstart.htm](http://www.simply-automated.com/products/sa_upstart.htm) into the Internet address field. The following window will open if you are using Windows XP and Internet Explorer. (If you are using an older version of Windows you will need to have Win Zip or a similar program on your computer. (A Win Zip download is available: <http://www.download.com/3000-2250-10003164.html> .)



2. Select, "Save".
3. A window opens that allows you to select where to save the zip file. It can be saved to a folder used for downloads or the desktop. Make note of where you are saving it in case you want to find it later.
4. Once the download is complete the Download Complete window allows you to "Open" the file.



5. A Windows Explorer window opens listing a single file. Double click on the executable file: UPBXXSetup.exe. The XX indicates the current version of UPStart and is subject to change as UPStart evolves (e.g.: 43 = version 4.3, etc.). As long as you have a program that opens "Zip" files on your computer the following window will appear:

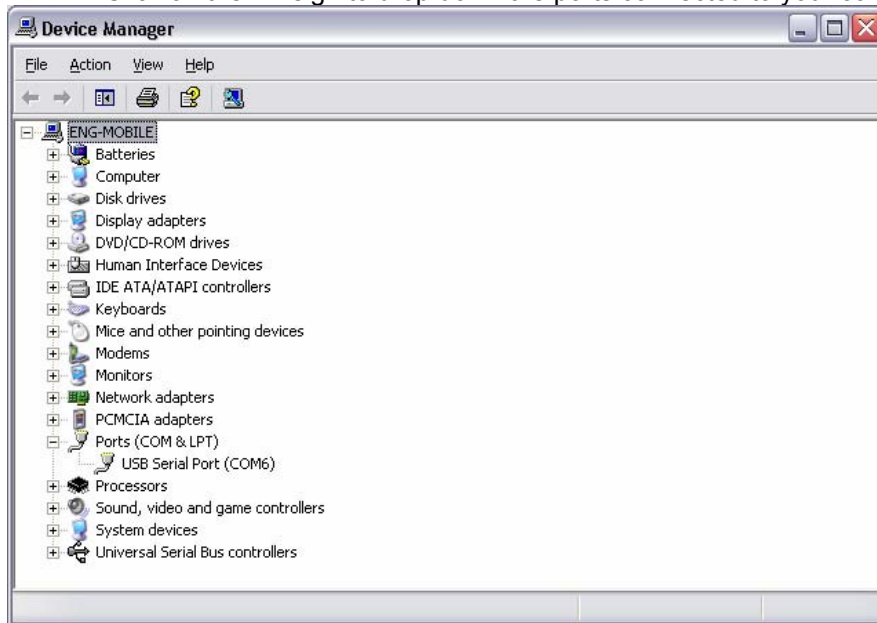


6. Click on Run to start the UPStart installation.

7. Select the defaults that appear in the installation screens. Advanced users can put the files where they would like them. The defaults install the UPStart program under Program Files in a folder named UPB.
8. Once the installation is completed click on Finished. Close the zip file window. UPStart has been installed in the Program Files folder.

## Connecting the Computer Interface Module

1. If you have not connected the Computer Interface Module (CIM), Model UMC-DB9-W, (aka: PIM – Powerline Interface Module) to your computer, do it now.
2. Using the UMC-DB9-W:
  - a. Plug the CIM into a receptacle near your computer.
  - b. Using the serial cable that came with the CIM plug the appropriate end into the CIM and the other into the serial port on your computer.
  - c. If you do not have a serial port you can use a USB to serial adapter. **Do not connect the CIM to your USB adapter until after the adapter has been installed into Windows.**
    - i. The following is a list of USB to serial adapters that have been tested with the CIM and UPStart
      - ELK ELKUSB232 – Sold by Home Controls
      - SIIG JU-CB1S12
      - IO Gear USB-2930
      - IO GEAR GUC232A
      - Belkin F5U109-CU
      - Cables Unlimited USB-2920
      - BAFO Technologies BF-810
      - Keyspan USA-19HS
      - PCMCIA Card - Quatech SSP-100
    - ii. Follow the installation directions that came with your USB adapter.
    - iii. Even though you are using your USB port on your computer you must select the non USB Powerline Interface module in UPStart. To do that you need to know the com port that your USB to serial adapter captured which is found as follows:
      1. Go to Start → Control Panel → System → Hardware → Device Manager → Ports
      2. Click on the “+” sign to drop down the ports connected to your computer.



3. Your USB adapter should be listed here with the com port it has been assigned by Windows. Make note of the com port. Click on “Cancel” to exit.
- d. Connect the CIM to the USB adapter only after the USB port has been recognized by Windows.

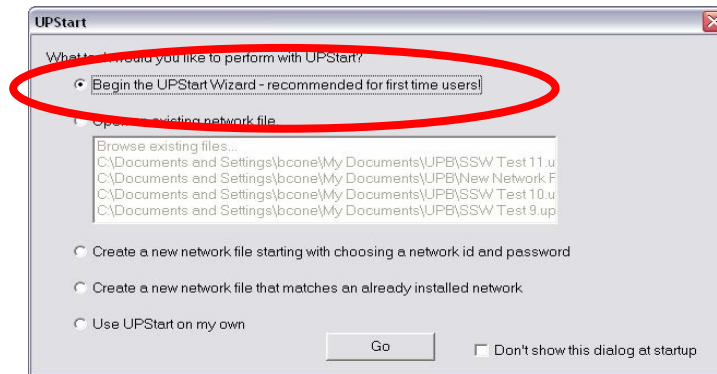
3. The UMC-USB-W will work with Windows XP with out downloading a driver.
  - a. Plug the UMC-USB into a standard wall receptacle near your computer.
  - b. Use the accompanying USB cable, or any standard USB cable.

## Getting Started with UPStart – The UPStart Wizard

This introductory Wizard provides a step by step method of creating a UPB network with installed devices. In a nutshell the steps are: Create a UPB Network, Add Devices, Create Links, Add Links to Devices and Save the File. Once UPB devices and the Computer Interface Module are installed:

### Open UPStart

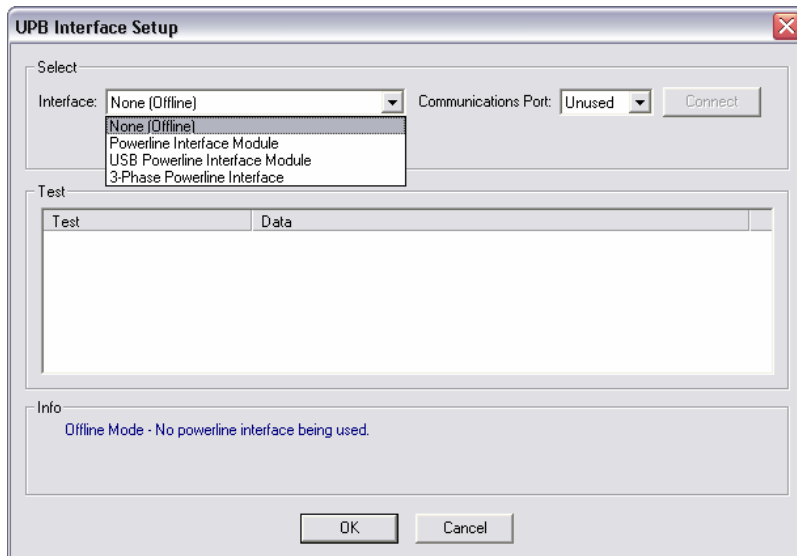
1. In Windows XP click on Start, select: → All Programs → UPB → UPStart.
2. **Select:** Begin the UPStart Wizard



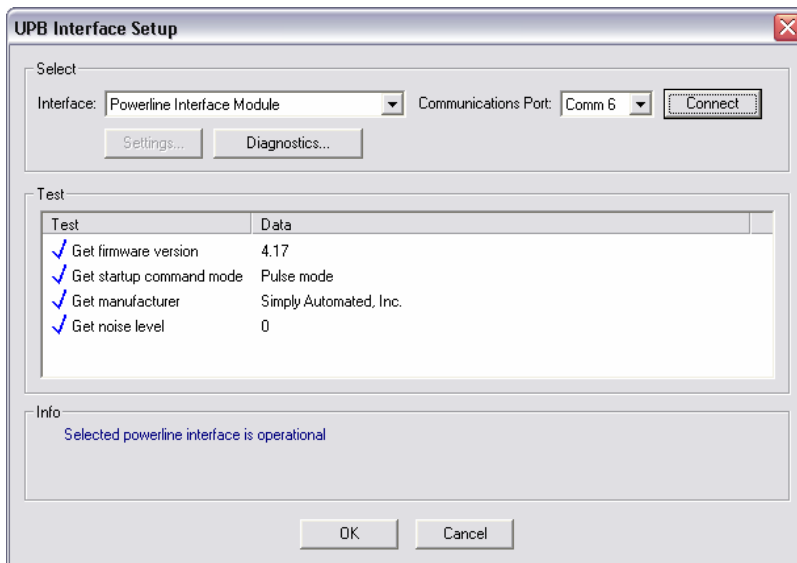
- a. Click Go.
- b. UPStart's defaults are for Com 1 to be connected to the CIM. If that is not the case with your computer you will need to let UPStart know where to look for the CIM.
- c. Click on Interface Connect.



- i. Select: the appropriate Powerline Interface Module and the appropriate Communications port.
- ii. Click Connect

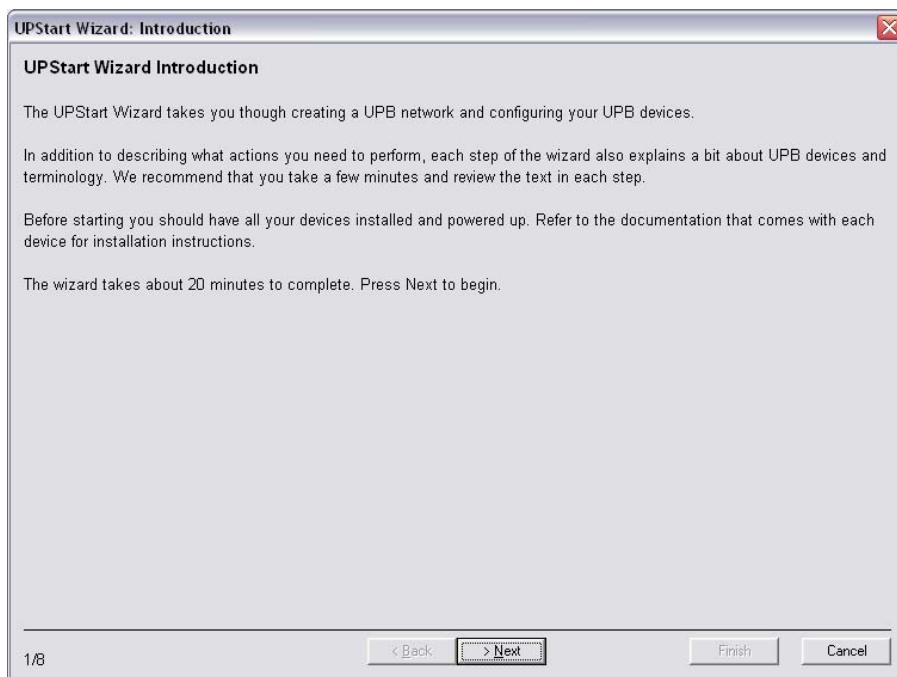


iii. UPStart will establish communications with the CIM.



iv. Click OK

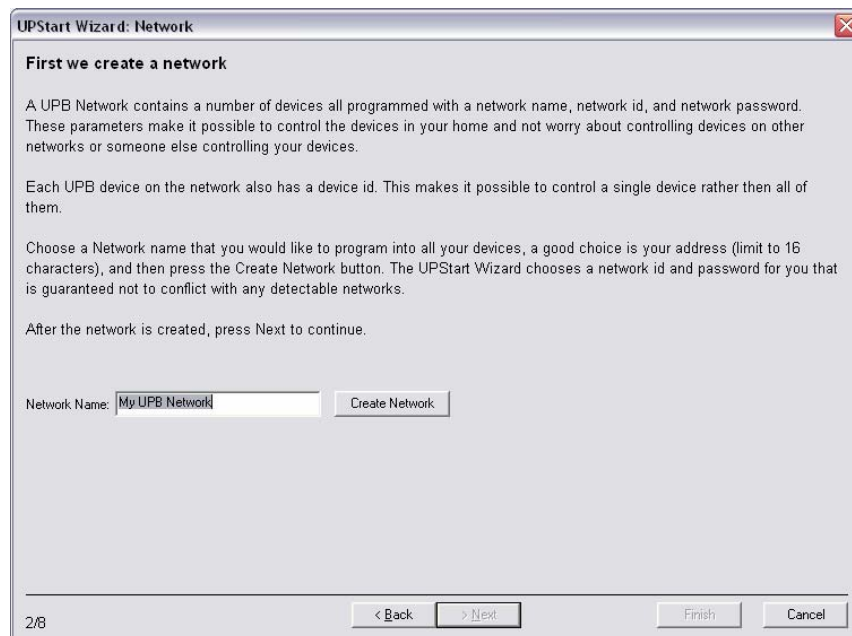
1. If a red X appears it is likely that you have selected the wrong com port or Interface Module, or that the interface module is not plugged in or powered. Make sure the LED on the CIM is orange, reselect and click Connect.
3. Once connected to the CIM the Introduction window appears:



4. Read the introduction... It is a good idea to read all the verbiage on the presented windows in this wizard. Reading and understanding will enhance working with UPStart beyond the Wizard. Click Next once read and understood.

## Create a Network

5. The first step is to create a network.



- a. Enter the desired Network Name (16 characters). The address is a good choice.
- b. Click on "Create Network" button.
  - i. Upstart assigns a Network ID and Password. The Network ID will be displayed briefly.
- c. Click Next to continue.

## Add Devices

6. Adding devices is the next step.
  - a. The information on this screen explains what happens as you add devices and how to proceed.
  - b. Click Next to continue.
  - c. Select the first device to add:
    - i. Enter Room Name (16 characters)
    - ii. Enter Device Name (16 characters)

**UPStart Wizard: Device Add**

**Add Devices**

To add a new device, first place the device into setup mode. If you don't know how to do that, press the Help button.

Once the device is in setup mode, enter a room name and a device name. You can choose names from the drop down lists or type in new names. When ready, press the Add button. This causes UPStart to read the device's memory, then to add it to your network and program it with the room and device names you entered.

If you have more than 12 devices to add don't worry! UPStart can add 250 devices on each network. At the end of this Wizard you are given information on how to learn to add more devices and how to perform additional configuration.

Help

Room Name	Device Name	Add
		Add
		Add
		Add
		Add
		Add
		Add
		Add
		Add
		Add
		Add
		Add
		Add
		Add
		Add
		Add
		Add

4/8 < Back > Next Finish Cancel

- iii. Put selected device in set up mode.
  1. For all plug-in and wired-in devices press the recessed button with a **non-conductive** tool such as a toothpick or a golf tee (also known as a UPB device configuration tool) 5 times consecutively. The LED should begin to flash green.
  2. On the US11-30 or US2-40 wall switches press any button or rocker 5 times consecutively. The LED should begin to flash green.
  3. Devices will stay in Setup mode for 5 minutes or until the button or rocker is pressed 2 times consecutively.
  4. Time between button pushes must be less than  $\frac{3}{4}$  of a second.
- iv. Click on the Add button.
  1. UPStart will read and then write to the device and add it to the UPStart file.
  2. If the device is configurable UPStart will need to know the configuration and will pause after reading the device to allow you to define the configuration (faceplate, etc.).
- d. This wizard allows installation of 250 devices. Continue until all desired devices are added.
- e. Click Next.



## Creating Links

7. Creating Links – Scene control.
  - a. Read introduction to Links.

**UPStart Wizard: Links**

**Links tie the whole network together**

What is a Link? Simply put, a Link is just a number from 1 to 250. What it does is more important than what it is. Associated with any UPB device that receives commands (like a switch or module) is what is called a Receive Components Table. Each entry in the Receive Components Table contains a level and, if the device is dimmable, how fast it turns on or off.

Devices that transmit, like keypads or the buttons and rockers on some switch faceplates, can transmit a Link when the rocker is tapped or the button pressed.

When a device receives a Link and if the Link is found in its Receive Component Table, it responds according to the settings in the table. Devices can be programmed to turn on at any available level, even 0% which turns the device off. This Wizard helps you program a transmitter to send a Link, programs one or more devices to respond to that Link, and has them all controlled by one click of a button or tap of a rocker. In the next steps of the Wizard you will do exactly that.

You may select the Link names suggested here or change them to your own Link names. If you wish to add more than 12 Links - a UPB network can support 250 Links - at the end of this Wizard you are given information on how to learn to add more Links and how to perform additional configuration.

Click Next to continue.

Link Names:

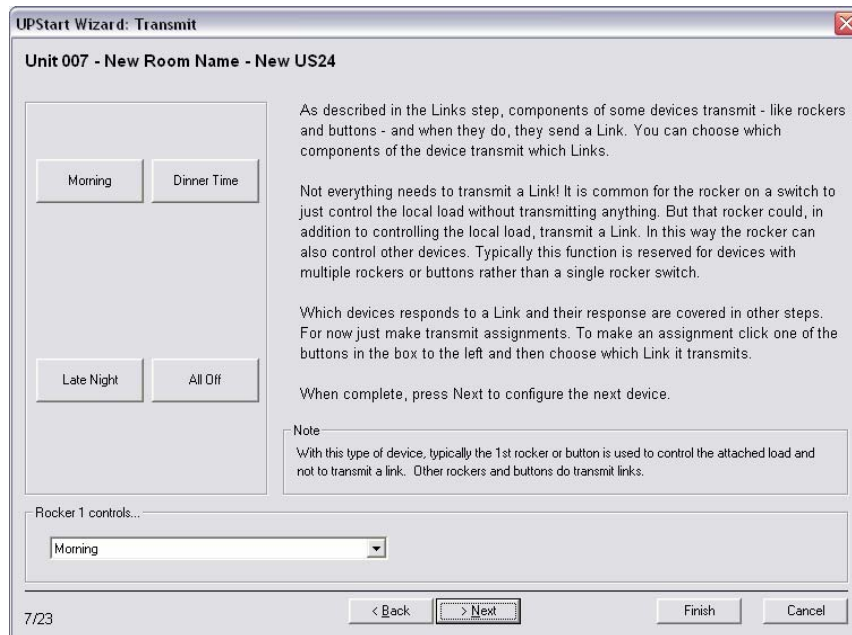
- Morning
- Dinner Time
- Late Night
- Fan
- Lamp
- All On
- All Off
- RLM
- UMI
- UFR
- UMA
- Bulb

5/8      < Back      > Next      Finish      Cancel

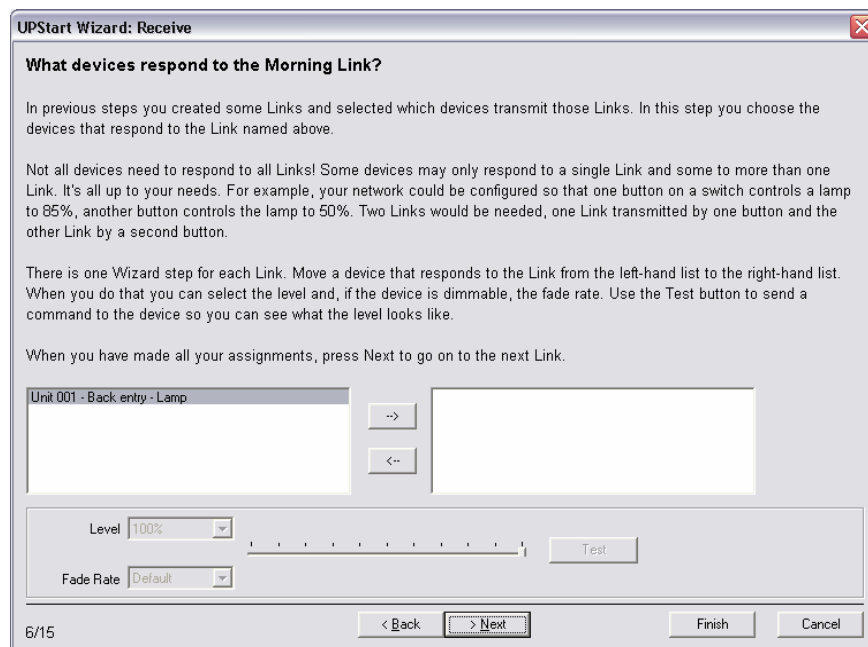
- b. Enter Link names. The names that are entered on this page may be overwritten, edited or erased, they are intended as examples of the function of Links.
    - c. Click Next when all Link names are added (maximum 250 Links).

## Add Links to Devices

8. Add Links to Devices.
  - a. Transmit Links:
    - i. Click on the button on the screen that represents a button or rocker on the installed faceplate.
    - ii. Select a Link from the drop down list.
    - iii. Click Next and continue.



b. Receive Links:



- i. Select devices that respond to the selected Link whether they need to be turned on, dimmed to a specified level or turned off to create the desired “scene”.
- ii. Set desired lighting Level, and Rate where appropriate.
- iii. Click Next to continue.

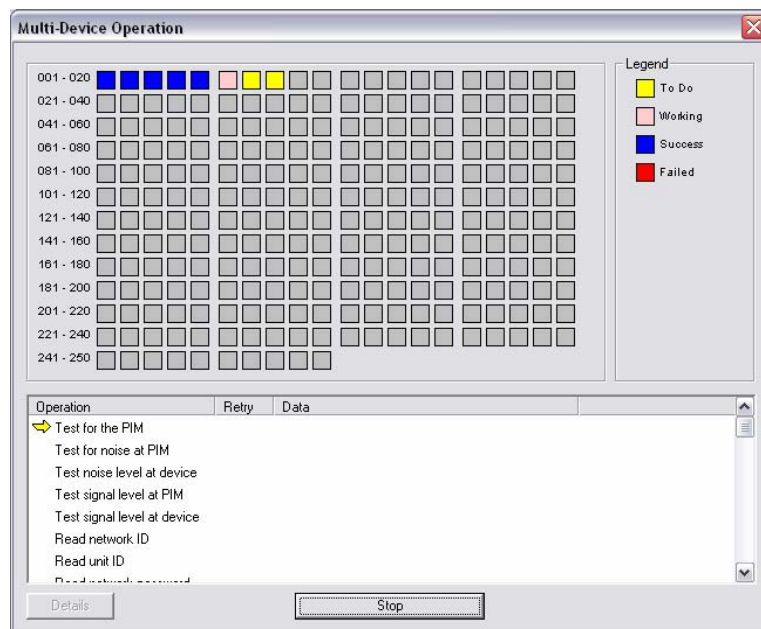
*The UPStart Wizard has now added up to 250 devices, created up to 250 Links and is now ready to program each device with the Room Name, Device Name, Device ID and appropriate Links ID(s).*

## Program Network

9. Click on “Program Network”.



- a. The following window appears. All the devices that have been added first appear as a Yellow box. The box turns Pink when being programmed, which takes nearly 30 seconds per device. A Blue box is a successfully programmed device. A Red box indicates a device that was not successfully programmed. There may be a problem communicating with that device at this point. Once the UPStart Wizard is complete, right-click on the device icon and select: Program. If that is not successful further troubleshooting may be required. (Refer to Troubleshooting and Technical Talk in the “Getting Started with UPStart” guide)



- b. The Multi-Device Operation window will disappear when programming is complete.
- c. Click >Next to continue

## Test Operation

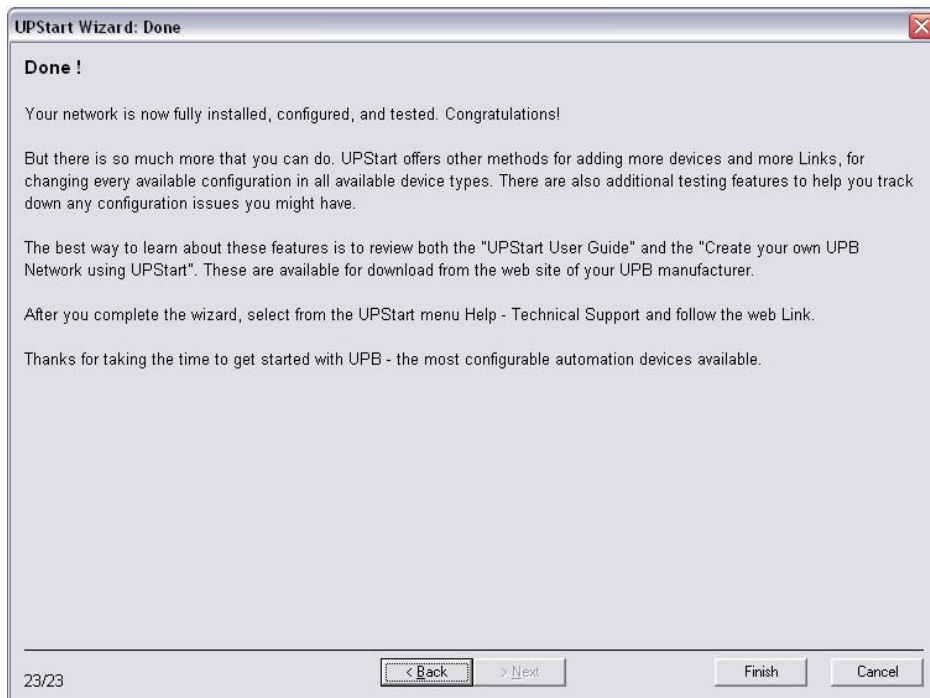
### 10. Test Links:

- c. Click Activate to turn a Link on and Deactivate to turn a Link off. If it is not working as envisioned changes can be made by clicking Back or finishing the Wizard and performing edits by other methods available in UPStart.
- d. If some Links do not appear to work even though devices are properly programmed there may be UPB communication issues. See the Troubleshooting section of the "Getting Started with UPStart" user guide.



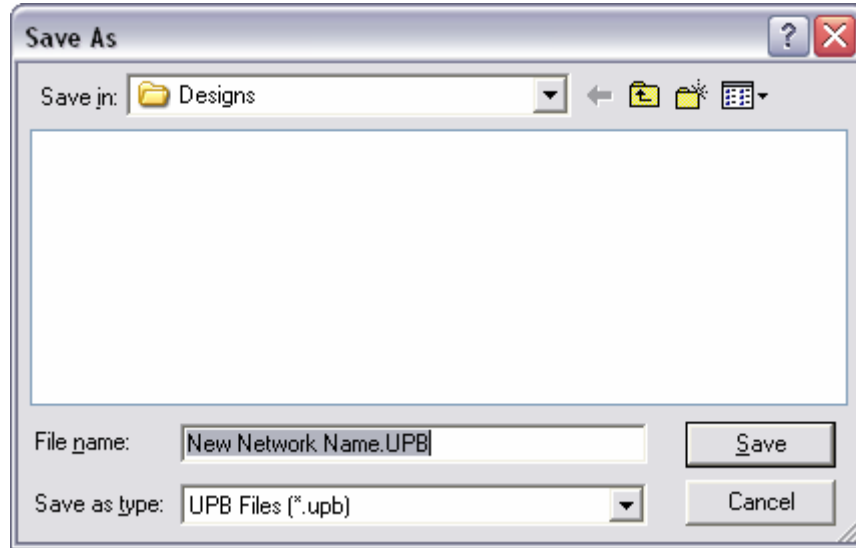
### 11. DONE!

- e. Click "Finish".

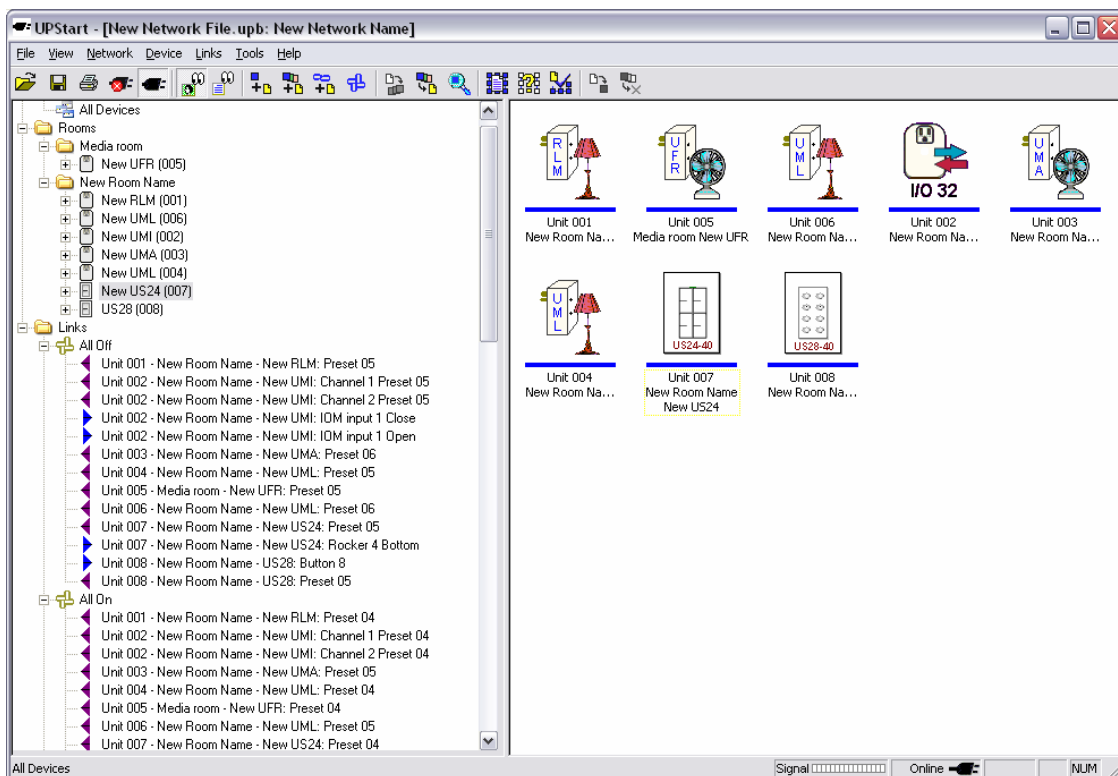


## Save File

12. Save UPB file:



- f. Save as address or home owners or other unique name.
  - a. Default directory is c:/Program Files/UPB/Designs



## Editing

To add more devices, links or edit either go to File... UPStart Wizard and select Configure Existing. Editing can be done outside of the UPStart Wizard. See the "Getting Started with Upstart" guide for more details.