

SimplyBrilliant™ UPB Universal Dimming Transceiver Switches provide ultra-reliable control of new and existing lighting fixtures, lamps, and other electrical devices. Each unit controls a load of up to 900W. Multi-rockers/buttons communicate with Universal Powerline Bus (UPB) plug-in modules, fixture modules and/or other devices to control virtually anything that can be connected to existing wiring anywhere in the home.

Advantages of UPB

- **No new wires**
 - ▶ Communicates over existing power lines
- **UPB technology delivers...**
 - ▶ Exceptional reliability and noise immunity
 - ▶ Lowest installed cost compared to hardwired and RF solutions
 - ▶ No interference between adjacent homes
- **Easily reconfigurable - change control strategy without rewiring**

Features

- **Interchangeable rocker assemblies**
 - ▶ Change color and functionality in the field
 - ▶ Reduce inventory costs
- **Intuitive rocker action**
 - ▶ Both ON/OFF and dimming capabilities
- **Thinner depth profile allows easy installation**
- **Patent-pending contoured heat sink**
 - ▶ Delivers cooler operation
- **Thermal overload protection**
- **Aesthetically pleasing Blue/Green LED indicator**
- **200 dimming steps and Resume Dim**
- **Dedicated Remote Switch** (wired)
 - ▶ Provides inexpensive 3 or more-way control
- **Max Load:** 900W
- **Standard Colors:** White (W), Almond (A), Ivory(I), Black (BK), Brown (BN)



Simply Automated, Incorporated

5825 Avenida Encinas, Suite 101, Carlsbad, CA 92008 USA
 800-630-9234 • Office 760-431-2100 • Fax 760-431-2101
 sales@simply-automated.com www.Simply-Automated.com

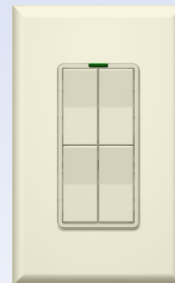
Make the Switch

...from this



Single Rocker Switch, White

...to this



Quad Rocker Switch, Almond

...or even this



8-Button In-Wall Controller, White

...without untwisting a single wirenut!

Interchangeable rocker faceplate assemblies allow for changes in color and upgrades in functionality in the field without disconnecting power or untwisting a single wirenut.

Specifications

Power:	120VAC +/- 10%, 60Hz
Max Load:	900W at 120VAC (7.5A) (see reverse for derating details)
Connections:	6" stranded pigtails, #16 AWG for power/load, 2 cage clamps for #14 AWG remote traveler wires
Operating Temperature:	30-120°F (0-50°C)
Physical:	
Dimensions:	4.2"H x 1.7"W x 1.6"D (107 x 43 x 41mm) depth inside J-box = 1.35"
Weight:	3.8 oz (108g)
Mounting:	standard J-box
Wiring:	Black AC Line White AC Neutral Brown Load (to fixture)

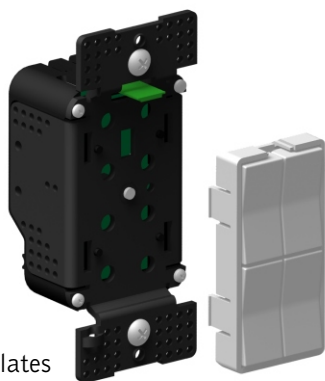
Prices and specifications are subject to change without notice.



Home Automation Made Simple.

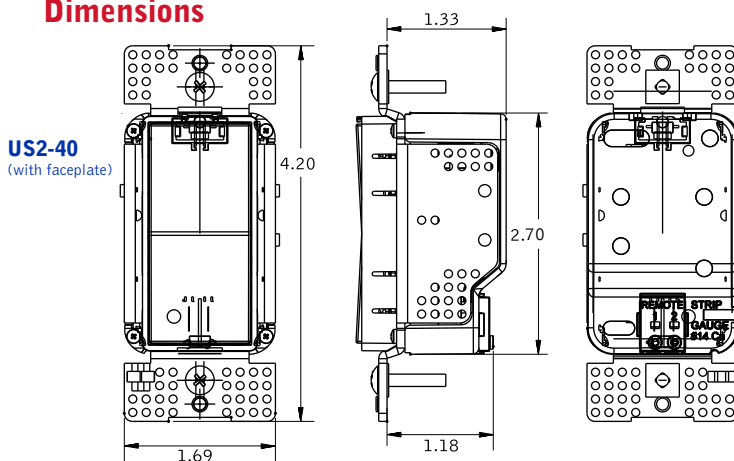
SimplyBrilliant™ UPB Universal Dimming Transceiver Switches provide ultra-reliable control of new and existing lighting fixtures.

Each Universal Transceiver Switch has one rocker/button that controls a single load of up to 900W. Base unit can be field-configured to accept single, double, triple, and quad rockers, as well as 4 and 8-button face plates. And, all faceplates are interchangeable in the field without ever having to untwist a wire nut!



All rockers and buttons are transmitters and are able to communicate with UPB plug-in modules and/or other UPB devices to control virtually anything connected to the household wiring.

Dimensions



Universal Transceiver Switch Base (Requires Faceplate)

US2-40 Universal Transceiver Switch Base

Transceiver Rocker Faceplates

Standard Colors: White (W), Almond (A), Ivory(I), Black (BK), Brown (BN)

- A **ZS11** Single
- B **ZS12** Dual (tall)
- C **ZS22** Dual (short)
- D **ZS23** Triple
- E **ZS24** Quad

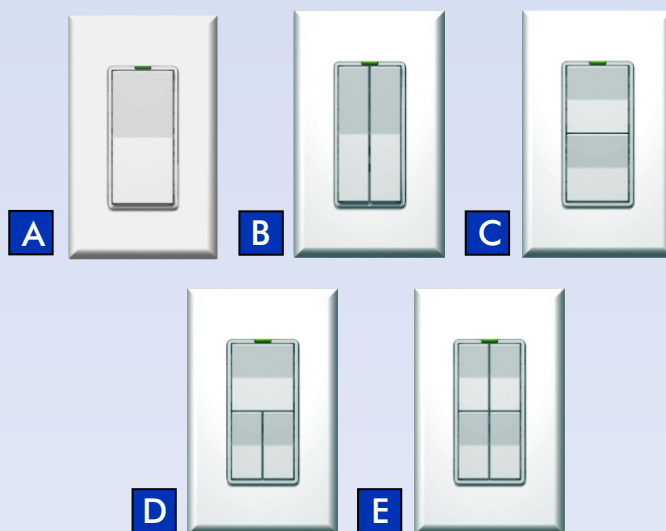
In-Wall Controller Faceplates

Standard Colors (Gloss Finish): White, Almond, Ivory, Brown, Black

- F **ZS24B** 4 Buttons, thin bar
- G **ZS240** 4 Buttons, oval
- H **ZS25B** 4 Buttons, w/1 rocker, thin bar
- I **ZS250** 4 Buttons, w/1 rocker, oval
- J **ZS28B** 8 Buttons, thin bar
- K **ZS280** 8 Buttons, oval

Color-matched to Leviton® Decora® faceplates.

Transceiver Rocker Faceplates



In-Wall Controller Faceplates



Gang and Derating

# of j-box Gangs	# of Dimmers in j-box	# of Dimmers in j-box		
		1	2	3+
1	1	600W	--	--
	2	800W	500W	--
	3+	900W	700W	500W