

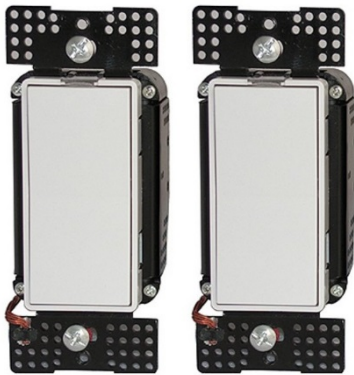


Lighting Controls and Automation Made Simple.

Anywhere Virtual Lighting/Load Controls Series

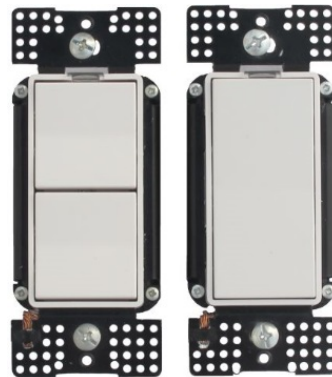
A simple cost effective alternative for lighting professionals.

- Remote lighting/load controls with no traveler wires needed (hot & neutral required)
- Use just 1 channel to control 1 or more loads, or use up to 4 channels to isolate separate circuit/zone controls – expandable to 10 with Scheduler-Timer (UCS-V0)
- Communicates up to a mile on a 14 AWG circuit
- Professional Grade, no batteries required, controls most any 120VAC load:
LED, fluorescent, incandescent, Halogen and pump/fan motors



Model V3WAY-A

Anywhere Virtual 3-Way Switch Kit
Easy virtual 3-way, 4-way, more-way switch applications. Control both switches in unison (includes 2, US1-V0 switches)



Model V3WAY-B

Anywhere Virtual 3-Way (2-Rocker) Kit
Easy virtual 3-way, 4-way, more-way application
Top-rocker controls local switch circuit, bottom-rocker controls remote 1-rocker switch circuit (includes 1, US2-V02 & 1, US1-V0 switches)

Anywhere Virtual Switches

Control Anywhere Virtual Switches and Modules



Model US1-V0
Configurable
Channels 1-4



Model US2-V02
Fixed Transmit
Channels 1, 2



Model US2-V03
Fixed Transmit
Channels 1, 2, 4



Model US2-V04
Fixed Transmit
Channels 1, 2, 3, 4



Lighting Controls and Automation Made Simple.

Anywhere Virtual Modules & Tabletop Controller Housing

Modules Controlled by Anywhere Virtual Switches and Scheduler-Timer



Model UFR-V0
Wire-in, 12 Amp relay
For hidden load controls:
under cabinet, driveway or
yard lights, fountain pumps,
ceiling fans, fixtures & more...



Model UMA-V0
Plug-in, 15 Amp relay
For easy to install load
controls: lamps, appliances,
holiday lighting, landscape
lighting and more...



Model URD-V0
Receptacle, 12Amp
Top outlet controlled,
bottom always On
Available colors: white,
almond, ivory light almond



Model ZTP2-W/BK
Tabletop Housing, Plug-In
Fits your Anywhere Switch choice
- one, two, three or four-rockers
(US2-V04 shown, sold separately)
Available colors: White or black

Anywhere Scheduler-Timer

Automatic and Manual Control of Anywhere Virtual Switches and Modules
Model UCS-V0



Expands Anywhere Virtual Switch and Module controls,
with up to 10 different channels

Enables use of extra channels to control loads
separately, from two different switches or timed events
– enabling scene / zone controls, like “All Off”

Controls Anywhere Switches and Modules
automatically - based on time and sunrise/sunset –
with up to 32 schedule events

Never needs to be reset due to seasonal changes
(daylight savings) or temporary power outages.

Used by electricians and landscape lighting professionals for over a decade.

Anywhere Series - No Computer Configuration Required!

The Anywhere Series is not compatible with any of Simply Automated's PC configured, Pre-Configured, SimplySmart™ or other UPB or UPStart configured products.

Simply Automated, Inc. – 6108 Avenida Encinas, Suite B, Carlsbad, CA 92011
Simply-Automated.com / 800-630-9234